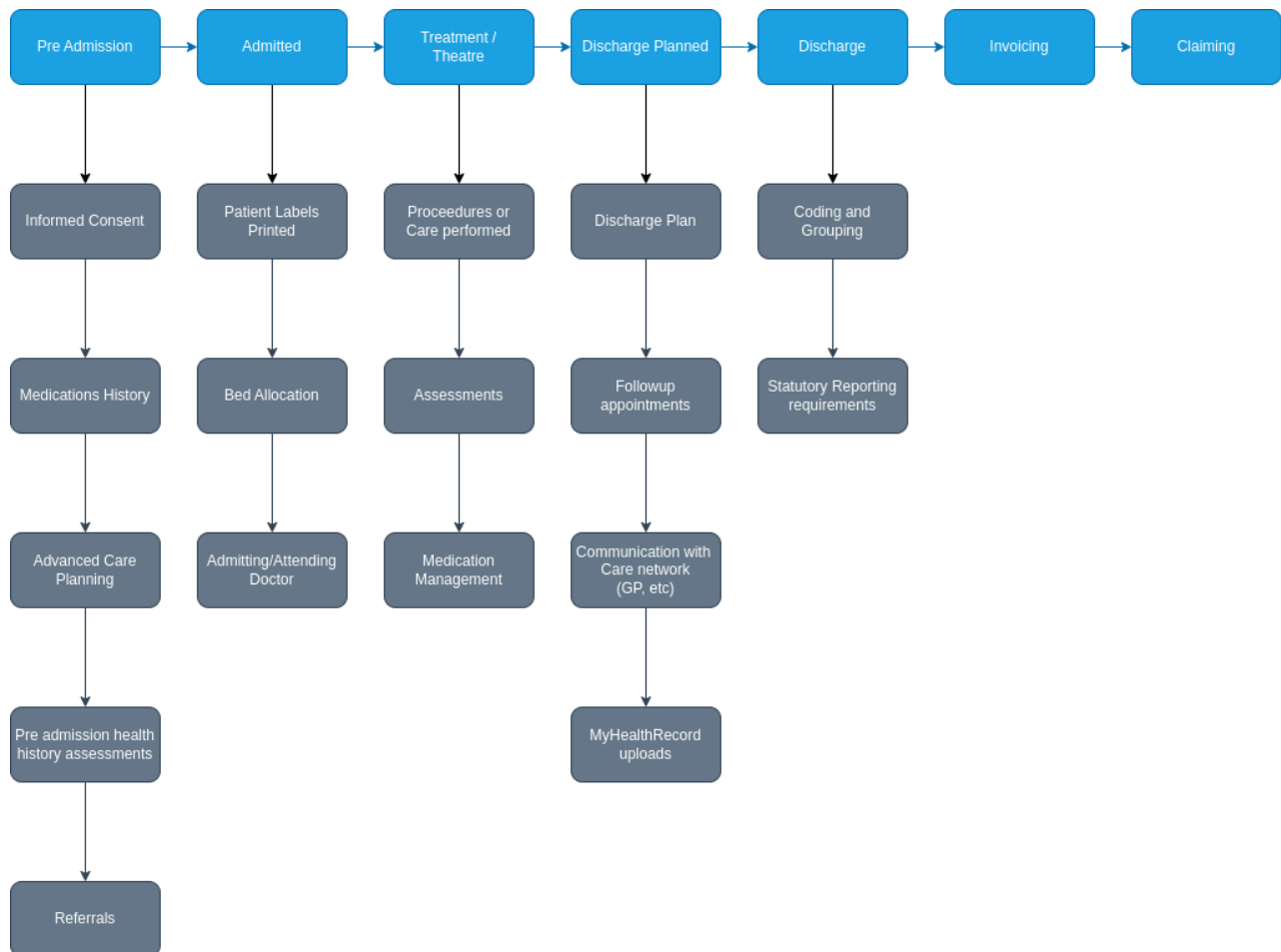


# Admissions - Overview

Last Modified on 09/10/2023 9:23 am ACDT

## Admissions

CareRight models the concept of a Hospital Admission, allowing for many of the activities below to be conducted or outcomes recorded. Many tools and capabilities exist focused on Same Day and Overnight admissions, both planned and unplanned for a variety of disciplines.



## Lifecycle

### Pre-Admission

This phase covers all activities prior to the point of admission. CareRight allows you to plan an Admission for when a patient will arrive.

Read more about [Pre-admissions - Overview](#), [Checklists](#), [Referrals](#), [Assessments](#), [Medications](#), [Online Eligibility Checks \(OEC, ECM, ECF and ECO\)](#) to discover the tools available.

You can have multiple pre-admissions open at any time.

### Admitted

This represents when a patient is legally admitted to your hospital.

Main article: [Admit](#)

You can only have one open admission (non-discharged) at a time.

### **Theatre/Treatment**

See [Theatre and Appointment Overview](#)

### **Discharge Planning**

Main Article: [Discharge Planning](#)

### **Discharge**

Main article: [Discharge](#)

If you are required to perform [Statutory Government Reporting](#) then you will need to [admit](#) and [discharge](#) patients.

### **Important note**

#### **Exclusion of Admissions from HMDS (WA Health)**

CareRight version 6.86 and above, now have a additional tick box to remove an Admission from being added to the HMDS Stats reporting. This only applies, if the Location of the admission is in Western Australia.

### **Statutory Reporting**

☐ Ignore in HMDS submission